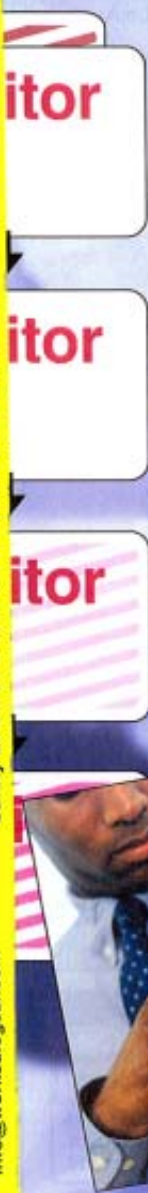


Safety Equipment Sales, Training, Gas Monitors, Personal Protective Equipment, Service, Hire, Installation, On-Site Inspection and Advice
Approved & Accredited by

WorkSafeGEAR[®]

A division of Heigtech Safety Systems
www.worksafegear.com

info@worksafegear.com
Safety Line: +61 8 9314 3377 Fax: +61 8 9314 3244



**Workplace Security Means
Protecting People's Safety**

Keeping Your Workplace Secure

Workplace security means protecting people's safety as well as company assets. With security and OH&S becoming more important than ever before, how do you keep your facility safe and secure?

Access Control is the key to maintaining workplace security. It is achieved by the use of restrictive devices or identification methods at various points to control the movement of people and vehicles into or out of an area or building. In essence, it allows you to control WHO goes WHERE and WHEN.

Effective Control Measures are simply steps you can take to not only increase the level of security in your workplace, but also reduce the risk of accidents or injuries. You can identify these by conducting a risk assessment. Examples of security controls include limiting entry/exit points to your facility, implementing a visitor registration system and installing signage, security cameras, alarms in high risk areas.

Brady has a range of security solutions to help your business reduce the risk in your workplace and stay secure.

SURVEILLANCE CAMERA SIGNS



180 x 250 SS 843379	180 x 250 SS 843381	180 x 250 SS 843463
300 x 450 POLY 843593	300 x 450 POLY 843081	300 x 450 POLY 843944
300 x 450 MTL 843746	300 x 450 MTL 844010	300 x 450 MTL 843750



180 x 250 SS 843432	180 x 250 SS 843701	180 x 250 SS 843075
300 x 450 POLY 843434	300 x 450 POLY 843952	300 x 450 POLY 843087
300 x 450 MTL 843695	300 x 450 MTL 843078	300 x 450 MTL 843375

These signs provide a highly visible warning to thieves, shoplifters, criminals and vandals - an ideal deterrent for all areas of your facility. Use in areas where covert cameras are not easily visible, they form an integral part of your security system whilst reassuring customers visitors and employees. Choose from three materials to suit your specific requirements; self-adhesive vinyl, polypropylene or metal.

Size	Material	Price (EX GST)
180 x 250mm	Self-Sticking Outdoor Vinyl	\$11.90
300 x 450mm	Poly-Outdoor rigid Polyprop.	\$22.50
300 x 450mm	MTL Colourbond Steel	\$23.90

SIMULATED SURVEILLANCE CAMERAS

These ingenious simulated surveillance cameras are indistinguishable from 'live' ones. A new improved state-of-the-art design and constantly flashing LED 'recording' light will deter most thieves and petty criminals. The commercial quality, high impact styrene camera housing ensure the cameras can be used outside as well as in. Taking only minutes to install, these dummy cameras require no wiring and operate off C size batteries (not included).



Part Number	Price (EX GST)
843958	\$94.50

SECURITY SIGNS



Size	Material	Price (EX GST)
600x450mm	MTL - Colourbond Steel	\$28.90
600x450mm	POLY-Outdoor Polypropylene	\$26.90
450x300mm	POLY-Outdoor Polypropylene	\$22.50
300x225mm	MTL - Colourbond Steel	\$21.90
250x180mm	SS Self Adhesive Vinyl	\$11.90

<p>SECURITY NOTICE</p> <p>RESTRICTED AREA KEEP OUT</p> <p>600x450 POLY 841729 450x300 POLY 841730</p>	<p>SECURITY NOTICE</p> <p>ALL VISITORS MUST REPORT TO RECEPTION</p> <p>600x450 MTL 840327 450x300 MTL 840329 250x180 SS 838649</p>	<p>SECURITY NOTICE</p> <p>THESE PREMISES ARE PATROLLED BY GUARD DOGS</p> <p>600x450 POLY 841723 450x300 POLY 841724</p>	<p>SECURITY NOTICE</p> <p>NO UNAUTHORISED PERSONS BEYOND THIS POINT</p> <p>600x450 POLY 834260 450x300 POLY 841644</p>
<p>SECURITY NOTICE</p> <p>THIS DOOR IS ALARMED</p> <p>600x450 POLY 841754 450x300 POLY 834258</p>	<p>SECURITY NOTICE</p> <p>VEHICLES AND CONTENTS ARE LEFT ENTIRELY AT OWNERS RISK</p> <p>600x450 POLY 841731 450x300 POLY 841732</p>	<p>SECURITY NOTICE</p> <p>THIS PROPERTY IS PROTECTED BY ELECTRONIC SURVEILLANCE</p> <p>600x450 POLY 841727 450x300 POLY 841728</p>	<p>SECURITY NOTICE</p> <p>TRESPASSERS WILL BE PROSECUTED</p> <p>600x450 POLY 841725 450x300 POLY 841726</p>
<p>SECURITY NOTICE</p> <p>RESTRICTED AREA AUTHORISED PERSONNEL ONLY</p> <p>600x450 POLY 841755 450x300 POLY 834256</p>	<p>SECURITY NOTICE</p> <p>THIS AREA IS UNDER 24 HOUR TV SURVEILLANCE TRESPASSERS WILL BE PROSECUTED</p> <p>600x450 POLY 834268 450x300 POLY 841756</p>	<p>SECURITY NOTICE</p> <p>VIDEO SURVEILLANCE IN USE ON THESE PREMISES</p> <p>600x450 POLY 834264 450x300 POLY 841757</p>	<p>SECURITY NOTICE</p> <p>NO ADMITTANCE WITHOUT SECURITY PASS</p> <p>600x450 MTL 840322 600x450 FLUTE 840325 450x300 POLY 840329 300x225 MTL 840324</p>

HEIGHT INDICATOR TAPE

SECURITY



Black & White -
Numbered

Tape is designed to adhere to or near the door of your establishment, so you can determine the approximate height of an individual as they enter or leave. Black and white version has a white reflective background with black numbers and is made from high quality, durable vinyl. Tape is applied 120cm (4ft) from the bottom of door frame covers 120cm (4ft) to 330cm (7ft). Use the coloured bar style when you need to see a person's height fast. Ideal for service stations, reception areas or banks. Made from self adhesive non-reflective vinyl.

Part Number	Description	Dimensions	Price (EX GST)
850312	Black & White- Numbered- Each	38x210mm	\$15.90
851915	Coloured Bars- Un Numbered Pk- 5	25x410mm	\$19.90



Coloured bars -
Unnumbered

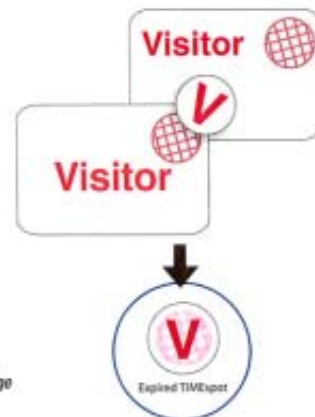
VISITOR LOG SYSTEM

This Visitor Log System consists of a special clipboard with badges clipped to the board, over which is placed a carbon backed sign-in log sheet. Once the visitor has filled in their details, simply lift the log sheet and remove the badge for the visitor. The badge records a copy of the visitor information when they sign in. Apply the timing dot to the badge activating the unique TIMEbadge technology, causing the badge to expire after 24 hours.



Information in boxed area transfers to badge

NAME (PLEASE PRINT): _____
 ADDRESS: _____
 WORK TITLE, OR _____
 NAME (PLEASE PRINT): _____
 DATE: _____
 PURPOSE OF VISIT: _____
 TIME IN: _____ TIME OUT: _____



Part Number	Description	Pack Qty	Price (EX GST)
852012	Visitor Log System Start-Up Pack*		\$239.00
852014	TIMESpot Self Adhesive Badges- Sheet form see*	1,200	\$49.90
852013	One Day TIMEspots	100	\$6.50
852013	Clipboard	1	\$105.00
852016	Logsheet Refills- Pack of 100 Sheets	1,200	\$579.00

* Visitor Log System Start-Up Pack includes 300 badges, 300 TIMEspots, 25 Log sheets (300 records) and one clipboard.



Section 8 of the OH&S Act 2000 states that "an employer must ensure the health, safety and welfare at work of all employees and also that people other than employees are not exposed to risks to their health & safety arising from the conduct of the employer's undertaking while they are at the employer's place of work."

Source: NSW Occupational Health and Safety Act 2000 No. 40

Choose from these TIMEspot designs:



* 852015 852074 852075

ONESTEP TIMEBADGE®

ONEstep TIMEbadge® works on the same principle as the ordinary TIMEbadge®, simply remove liner from the frontpart and press onto the backpart to activate the "bleeding" process. There is no simpler way to protect the security of your workers.



Remove liner...

and press badge together

Part Number	Pack Qty	Price (EX GST)
845710	100	\$49.90

TEMPBADGE SCHOOL SECURITY PASSES

Visitor passes in schools are becoming standard procedure. Issuing passes is simple, but what about collecting them as the visitor leaves?

A 51 x 76mm TEMPbadge visitor pass expires automatically so there's no need to collect it. Applying the "smiley face" activates the pass. The colour changes from blue to orange lets you know it's expired - with no hardware or electronics!

Part Number	Description	Pack Qty	Price (EX GST)
845716	School Visitor Temp Badge	100	\$14.90
845722	Smiley Timing Circle School	100	\$12.50



School Visitor Tempbadge and smile timing circle are required for activation of expiring process.

TIMEBADGE® SELF EXPIRING SECURITY BADGES

Why Use TIMEbadge Technology?

TIMEbadge® is a unique system that prevents visitors and contractors from re-using their badges to gain unauthorised access to your premises. TIMEbadge® changes colour when your visitor's badge is no longer valid.

Each TIMEbadge® consists of a specially coated white adhesive FRONTpart and a BACKpart that is pre-printed with a time-release ink. Once the FRONTpart is applied to the BACKpart, the TIMEbadge® is activated. The result is a gradual colour change that signals when the badge has expired and is no longer valid. TIMEbadge® is not affected by light, so the expiration process works indoors and outdoors, day or night. The perfect solution for protecting workers and guests in your facility.

Expiring TIMEbadge Range

Simply combine a FRONTpart option with your choice of BACKpart options:

FRONTpart Option

Available with- Visitor, Contractor, Temporary or your own custom wording in packs of 100.

BACKpart Options

Self-Adhesive: Can be stuck directly onto clothing, for a quick and convenient badge. Adhesive is not suitable for delicate fabrics.

Clip-On CARDbadge (Blank): Available with coloured headers to allow you to colour code visitors to your site. Simply add the FRONTpart and CARDbadge clip to clothing for quick means of identifying visitors onsite.

Clip-On CARDbadge With Printed Header: Categorise visitors with ease. Available in four colour titles to help distinguish visitor type. Use in conjunction with FRONTpart and CARDbadge clip.

CARDbadge Backpart - Blank with colour headers



CARDbadge Backpart with coloured pre-printed headers



Part Number	Description	Pack Qty	Price (ex GST)
845718	Visitor FRONTpart SS	100	\$55.90
845719	Temporary FRONTpart SS	100	\$55.90
845720	Contractor FRONTpart SS	100	\$55.90
845711	BACKpart CARDbadge-Blank (Yellow)	100	\$11.00
845712	BACKpart CARDbadge-Blank (Red)	100	\$11.00
845713	BACKpart CARDbadge-Blank (Green)	100	\$11.00
845714	BACKpart CARDbadge-Blank (Blue)	100	\$11.00
852069	BACKpart CARDbadge-Printed (Blue)	100	\$11.00
852070	BACKpart CARDbadge-Printed (Yellow)	100	\$11.00
852071	BACKpart CARDbadge-Printed (Red)	100	\$11.00
852072	BACKpart CARDbadge-Printed (Green)	100	\$11.00
845715	CARDbadge Clip	100	\$26.50
845721	BACKpart- Self Adhesive	100	\$12.60

To Activate, apply self-adhesive FrontPart to a BackPart and the badge will do the rest



Expiring Process

Self-adhesive BackPart



Once activated TIMEbadges gradually expire over 24 hours

COLOURED LANYARDS



These easy to use lanyards are a professional way to attach badges. Made from durable cloth, they feature a snap swivel-hook and adjustable bead. Available in five colours. Size: 483mm in length.

STANDARD PACKAGE: 1

Part Number	Colour	Price (ex GST)
852594	Black	\$2.60
852595	Blue	\$2.60
852596	Red	\$2.60
852597	Green	\$2.60
852598	White	\$2.60

PRE-PRINTED LANYARDS

Made from Woven Nylon, these pre-printed lanyards include a breakaway clip. Choose from a pack of 12 or 100.

Size: 483mm in length.

Part Number	Description	Pack Qty	Price (ex GST)
852599	Visitor- Red	12	\$49.90
852600	Contractor- Blue	12	\$49.90
852601	Visitor- Red	100	\$399.00
852602	Contractor- Blue	100	\$399.00





ADJUSTABLE SEALS

Adjust-A-Seals™ are 180mm long and are both adjustable and recyclable. Made from durable polypropylene, they change colour if tampered with, and have a 13-18 kilogram breaking strength. They are embossed with the word "SEAL" and six consecutive numbers that are determined by the factory.

Part Number	Pack Qty	Price (EX GST)
849166	100	\$44.90



PULL-TITE PLASTIC SEALS

- Unnumbered Tags In Stock
 - Have Tabs For Writing Notes
- 225mm polypropylene seal has a 3.6kg – 4.5kg breaking strength, "SEALED DO NOT REMOVE" imprinted on one side of the end tab.

Red	Yellow	Green	Blue
852493	852494	852495	852496

Pack Qty	Price (EX GST)
100	\$57.50



STOCK POLY-LOK PLASTIC SEALS

Comes With The Word SEAL And Consecutive Numbering Embossed In White

Red	Yellow	Green	Blue
852499	852500	852498	852497

Pack Qty	Price (EX GST)
100	\$59.90

TAMPER RESISTANT TAPES



TAMPERVUE® SECURITY TAPE

Use Tampervue® security tape when packaging important goods. Appearing as a solid tape when applied, Tampervue® immediately reveals the hidden message "OPENED" once removed showing evidence of tampering. Tampervue® is difficult to remove and it's special coating prevents reuse.

Part Number	Size (w x l)	Price (EX GST)
848130	50mm x 45M	\$54.90



TAMPER RESISTANT LABEL/TAPE

Insure Safety And Prevent Tampering. Never wonder if your packages have been opened or tampered with again. The words "Tamper Resistant" appear on every inch of this roll of acetate labels. Once the package is sealed with the labels, opening it causes the tape to break. The broken tape is an obvious and definitive sign that the seal has been tampered with. Choose from two sizes of labels to suit your packaging needs.

Part Number	Size (w x h)	Labels Per Roll	Price (EX GST)
852490	16 x 32 mm	500	\$31.50
852492	16 x 63 mm	250	\$31.50

SECURITY MARKING PEN



Permanently mark your valuables



Easily read under UV light

Invisible ink allows you to permanently mark your valuables to ensure that they can be easily identified should a theft occur. Ink can be easily read under UV light. Pack includes anti-theft labels.

Part Number	Price (EX GST)
848341	\$35.90

DURAGUARD™ PROPERTY IDENTIFICATION TAGS

Use Duraguard Identification Tags on everything from computers, office equipment, desks, chairs, tables, file cabinets, tools, fire extinguishers, machinery equipment and electrical appliances.

Quick, easy and dependable identification printed to your exact specifications! Choose from many sizes and options.

There is no limit to what you can use Duraguard for. Service Call Tag, Product Tag with company details, Asset Identification, Computer ID, and much more. A durable, all purpose solution that sticks to nearly every surface.

KEY FEATURES

- Overlaminates protects against vandalism
- Universal adhesive adheres to most surfaces
- No set-up or logo charges
- 10 sizes to choose from
- Competitive pricing
- Professional looking Tags
- Available in either Standard or Tamper evident adhesive



Standard font used is Helvetica Bold.
If other fonts required please specify at time of order.

Colours Available:



CUSTOM OPTIONS

Personalisation: Customise your tags with your specific wording and company logo (submit camera-ready artwork in black for logo)
Numbering: 1-12 digit consecutive or non-consecutive numbering with or without an alpha-numeric prefix and/or suffix. Tags can be sequentially numbered or printed with your own numbering sequence, free of charge. Specify starting number of your sequence or supply us with your own alpha or numeric sequence on a 3.5" disk ASCII/Text Format).
Bar Codes: Specify the bar code symbology you need (code 39 or 128 for alpha-numeric, Interleaved 2 of 5 numeric only), and we'll add bar codes that correspond to your numbering sequence.
Endless Layouts: Simply advise us of how you want your tags to look and we'll lay them out accordingly.

HOW TO ORDER:

Specify Material, Size, Colour, Numbering, Bar Code Symbology (if applicable), Typeface, Wording (specify if "PROPERTY OF" should be included), Layout and Quantity. For logos, submit camera-ready artwork in black.

Description	Size	Price Per 100 Tags (EX GST)				
		300	500	1000	2500	5000
Duraguard - No Barcode	37.5 x 12.5mm*	\$136.50	\$105.00	\$73.50	\$55.00	\$42.00
Duraguard - No Barcode	38 x 19mm	\$141.90	\$111.50	\$77.90	\$59.90	\$48.50
Duraguard - No Barcode	50 x 12.5mm*	\$147.00	\$115.50	\$86.50	\$65.50	\$51.50
Duraguard - No Barcode	50 x 19mm	\$152.50	\$121.90	\$93.50	\$75.90	\$63.00
Duraguard - No Barcode	50 x 25mm	\$168.00	\$136.50	\$111.50	\$94.50	\$84.00
Duraguard - No Barcode	62.5 x 19mm	\$173.50	\$141.90	\$114.50	\$99.90	\$89.50
Duraguard - No Barcode	62.5 x 25mm	\$173.50	\$141.90	\$114.50	\$99.90	\$89.50
Duraguard - No Barcode	75 x 25mm	\$177.50	\$146.50	\$115.50	\$104.50	\$91.50
Duraguard - No Barcode	75 x 37.5mm	\$183.90	\$147.00	\$120.90	\$105.00	\$93.50
Duraguard - No Barcode	75 x 50mm	\$194.50	\$156.50	\$125.50	\$110.50	\$97.90
Duraguard - With Barcode	38 x 19mm*	\$149.50	\$116.90	\$81.90	\$63.00	\$50.50
Duraguard - With Barcode	50 x 19mm	\$159.90	\$128.50	\$97.90	\$79.90	\$66.50
Duraguard - With Barcode	50 x 25mm	\$176.50	\$143.90	\$116.90	\$99.90	\$89.50
Duraguard - With Barcode	62.5 x 19mm	\$181.90	\$149.50	\$119.90	\$105.00	\$92.50
Duraguard - With Barcode	62.5 x 25mm	\$181.90	\$149.50	\$119.90	\$105.00	\$92.50
Duraguard - With Barcode	75 x 25mm	\$185.90	\$153.50	\$121.90	\$109.50	\$95.90
Duraguard - With Barcode	75 x 37.5mm	\$193.50	\$154.50	\$127.50	\$110.50	\$97.90
Duraguard - With Barcode	75 x 50mm	\$203.90	\$163.90	\$131.50	\$115.50	\$102.90
Tamper Evident Duraguard - No Barcode	38 x 19mm	\$155.50	\$137.90	\$128.50	\$115.50	\$104.50
Tamper Evident Duraguard - No Barcode	50 x 19mm	\$162.90	\$148.50	\$133.50	\$119.90	\$107.50
Tamper Evident Duraguard - With Barcode	38 x 19mm*	\$160.90	\$144.90	\$134.50	\$120.90	\$108.50
Tamper Evident Duraguard - With Barcode	50 x 19mm	\$171.50	\$155.50	\$134.90	\$126.00	\$112.50

* Numbering and Barcode not available on these sizes
 • Maximum 8 characters for 39 Barcode, maximum of 12 characters for 128 Barcode and maximum of 14 characters for interleaved Barcode.
 • Minimum order of 300 tags applies.

- Reduced pricing
- No Setup Cost
- Improved Delivery Times



37.5 x 12.5mm



50 x 12.5mm

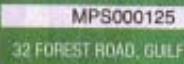


62.5 x 25mm

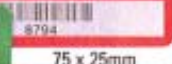


50 x 25mm 75 x 50mm

FEDERAL SAVINGS & TRUST



75 x 37.5mm



62.5 x 19mm